

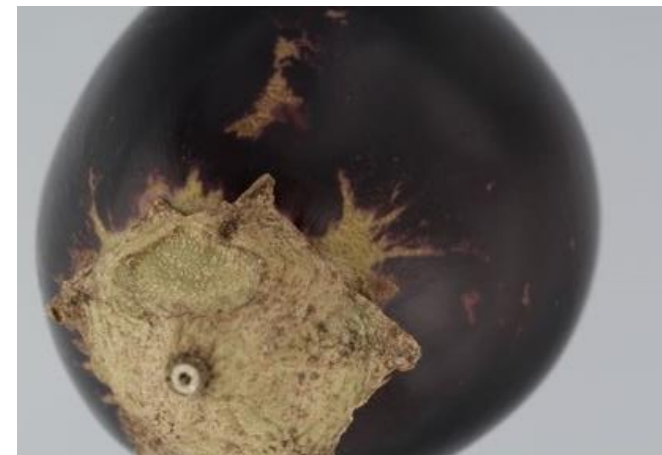
# Pest Alert: *Thrips palmi* (melon thrips)



**Figure 1.** Adult female *Thrips palmi* © Crown copyright.



**Figure 2.** *Thrips palmi* feeding on the underside of a leaf © Crown copyright.



**Figure 3.** Surface scarring on an aubergine caused by *Thrips palmi* © Crown copyright.

- *Thrips palmi* (melon thrips) is a pest of a wide range of **vegetables** and **ornamentals** such as aubergine, chrysanthemum, cucumber, peppers and tomatoes. It is **unlikely to establish outdoors** in the UK. **Outbreaks in protected crops** can rapidly build into heavy infestations.
- *Thrips palmi* is native to **South and Southeast Asia**, and has spread widely through tropical and subtropical regions. The pest is frequently intercepted in a number of European countries, including the UK due to the long-distance trade of host species. **Cut flowers, fruit and vegetables** from the known distribution are considered the main pathway for the insect to enter the UK.
- *Thrips palmi* can cause **direct damage by feeding** resulting in **surface silvery scars, leaf deformation** and **chlorosis**. The pest can also cause **indirect damage by vectoring tospoviruses** including *Groundnut bud necrosis virus*, *Melon yellow spot virus* and *Watermelon silver mottle virus*, whose infection could lead to further **reductions in vigour, yield and marketability**.

**If you suspect the presence of the pest, please inform the relevant authority (see over for details).**

**For finds at garden centres, plant nurseries or private gardens in England and Wales, contact your local APHA Plant Health and Seeds Inspector, or the PHSI headquarters, in York:**

Tel: 0300 1000 313 (please select option 3 when calling)

Email: [planthealth.info@apha.gov.uk](mailto:planthealth.info@apha.gov.uk)

**For Scotland, contact the Scottish Government's Horticulture and Marketing Unit:**

Email: [hort.marketing@gov.scot](mailto:hort.marketing@gov.scot)

**For Northern Ireland, contact the DAERA Plant Health Inspection Branch:**

Tel: 0300 200 7847 Email: [planthealth@daera-ni.gov.uk](mailto:planthealth@daera-ni.gov.uk)

Web: <https://www.daera-ni.gov.uk/topics/plant-and-tree-health>

For additional information on UK Plant Health please see:

<https://planthealthportal.defra.gov.uk/pests-and-diseases/uk-plant-health-risk-register/>

<https://planthealthportal.defra.gov.uk/>

<https://www.gov.uk/plant-health-controls>

<http://www.gov.scot/Topics/farmingrural/Agriculture/plant/PlantHealth/PlantDiseases>

<https://www.daera-ni.gov.uk>